

**Beschreibung**

100% Trevira CS  
470 g/lf. m,  
Breite 140 cm

**Prüfungsergebnisse**

Scheuerfestigkeit:  
100.000 Scheuerhübe,  
BS EN ISO 12947-2  
(Martindale)  
Lichtechtheit:  
5, BS EN ISO 105-B02  
Methode 2  
Pilling:  
4-5, BS EN ISO 12945-2  
Reibechtheit:  
Trocken 4-5, Nass 4-5,  
EN ISO 105-X12  
Flammschutz:  
CAL 117 E  
DIN 4102-1 B1  
NF P 92-503-507 M1  
ÖNORM A 3800-1  
B1/Q1/TR1  
BS 5852 wenn auf  
CMHR-Schaum  
montiert  
EN 1021-1/-2 wenn auf  
PUR-Schaum min.  
30 kg/m<sup>3</sup> montiert  
UNI VF 9175 1IM wenn  
auf CMHR-Schaum  
montiert

**Reinigung**

Festverspannte Bezüge:  
regelmäßig absaugen,  
professionelle Trocken-  
reinigung  
Abnehmbare Bezüge:

**Description**

100% Trevira CS  
470 g/lin. m, width  
140 cm (55")

**Test results**

Abrasion:  
100.000 rubs,  
BS EN ISO 12947-2  
(Martindale)  
Lightfastness:  
5, BS EN ISO 105-B02  
Method 2  
Pilling:  
4-5, BS EN ISO 12945-2  
Fastness to rubbing:  
dry 4-5, wet 4-5,  
EN ISO 105-X12  
Flame resistance:  
CAL 117 E  
DIN 4102-1 B1  
NF P 92-503-507 M1  
ÖNORM A 3800-1  
B1/Q1/TR1  
BS 5852 when  
covering CMHR-foam  
EN 1021-1/-2 when  
covering PUR-foam  
density min. 30 kg/m<sup>3</sup>  
UNI VF 9175 1IM when  
covering CMHR-foam

**Cleaning**

Fixed covers: periodical  
vacuum cleaning,  
professional cleaning  
with dry foam  
Removable covers:

**Description**

100 % Trevira CS  
470 g/m, laize 140 cm

**Résultats des tests**

Résistance à l'abrasion :  
100 000 révolutions  
selon, BS EN ISO  
12947-2 (Martindale)  
Résistance à la lumière :  
5, BS EN ISO 105-B02  
méthode 2  
Boulochage :  
4-5, BS EN ISO 12945-2  
Résistance au  
frottement :  
à sec 4-5, mouillé 4-5,  
EN ISO 105-X12  
Tenue au feu :  
CAL 117 E  
DIN 4102-1 B1  
NF P 92-503-507 M1  
ÖNORM A 3800-1  
B1/Q1/TR1  
BS 5852 sur support  
mousse CMHR  
EN 1021-1/-2 sur sup-  
port mousse polyuré-  
thane mini. 30 kg/m<sup>3</sup>  
UNI VF 9175 1IM sur  
support mousse CMHR

**Entretien**

Revêtements non  
amovibles : aspirer ré-  
gulièrement, nettoyage  
à sec professionnel  
Revêtements  
amovibles :

**Omschrijving**

100% Trevira CS  
470 g per l/m,  
breed 140 cm

**Testgegevens**

Slijtvastheid:  
100.000 toeren,  
BS EN ISO 12947-2  
(Martindale)  
Lichtechtheid:  
5, BS EN ISO 105-B02  
Methode 2  
Pilling:  
4-5, BS EN ISO 12945-2  
Wrijftechtheid:  
droog 4-5, nat 4-5,  
EN ISO 105-X12  
Brandvrijheid:  
CAL 117 E  
DIN 4102-1 B1  
NF P 92-503-507 M1  
ÖNORM A 3800-1  
B1/Q1/TR1  
BS 5852 indien op  
CMHR-schuim  
gemonteerd  
EN 1021-1/-2 wanneer  
op PUR-schuim wordt  
gebruikt moet het  
gewicht min. 30 kg/m<sup>3</sup>  
bedragen  
UNI VF 9175 1IM wan-  
neer op CMHR-schuim  
gemonteerd

**Reiniging**

Vaste bekleding:  
regelmatig stofzuigen,  
professionele reiniging  
met droogschuim  
Afneembare bekleding:

**Descripción**

100% Trevira CS  
470 g/m de 140 cm  
de ancho

**Pruebas**

Resistencia contra  
rozamiento:  
100.000 golpes,  
BS EN ISO 12947-2  
(Martindale)  
Resistencia a la luz:  
5, BS EN ISO 105-B02  
método 2  
Pilling:  
4-5, BS EN ISO 12945-2  
Solidez al rozamiento:  
seco 4-5, húmedo 4-5,  
EN ISO 105-X12  
Protección contra  
llamas:  
CAL 117 E  
DIN 4102-1 B1  
NF P 92-503-507 M1  
ÖNORM A 3800-1  
B1/Q1/TR1  
BS 5852 si se monta en  
espuma CMHR  
EN 1021-1/-2 si se  
monta en espuma PUR  
de mínimo 30 kg/m<sup>3</sup>  
UNI VF 9175 1IM si  
se monta en espuma  
CMHR

**Limpieza**

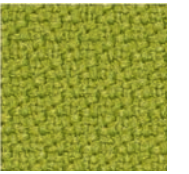
Tapizados fijos: aspirar  
regularmente limpieza  
profesional en seco  
Tapizados  
intercambiables:



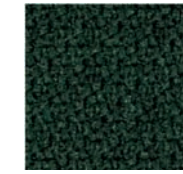
Pitch.



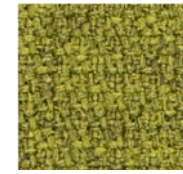
54/24



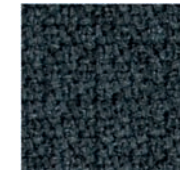
54/22



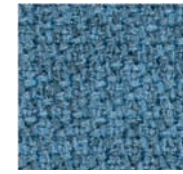
54/32



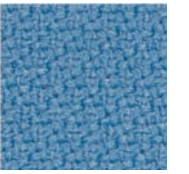
54/33



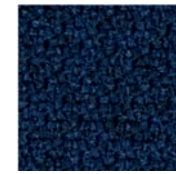
54/31



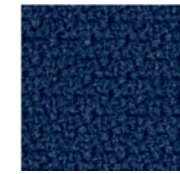
54/30



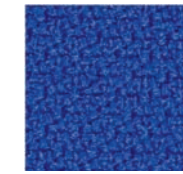
54/21



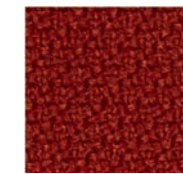
54/29



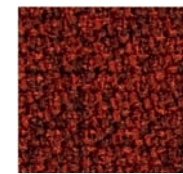
54/19



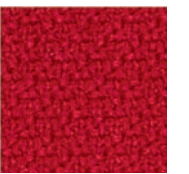
54/20



54/17



54/28



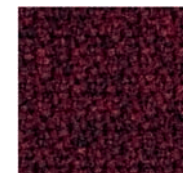
54/18



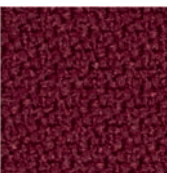
54/26



54/15



54/27



54/16



54/14



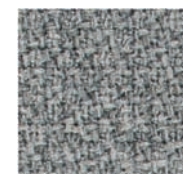
54/12



54/13



54/25



54/23



54/11

Die digitalen Muster weichen von den Originaltönen ab.  
The digital sample colours differ from the originals.  
Les échantillons numériques diffèrent du nuancier original.  
De digitale kleurstalen kunnen afwijken van de originele.  
Los tonos de colores de las muestras en formato digital, varían de los originales