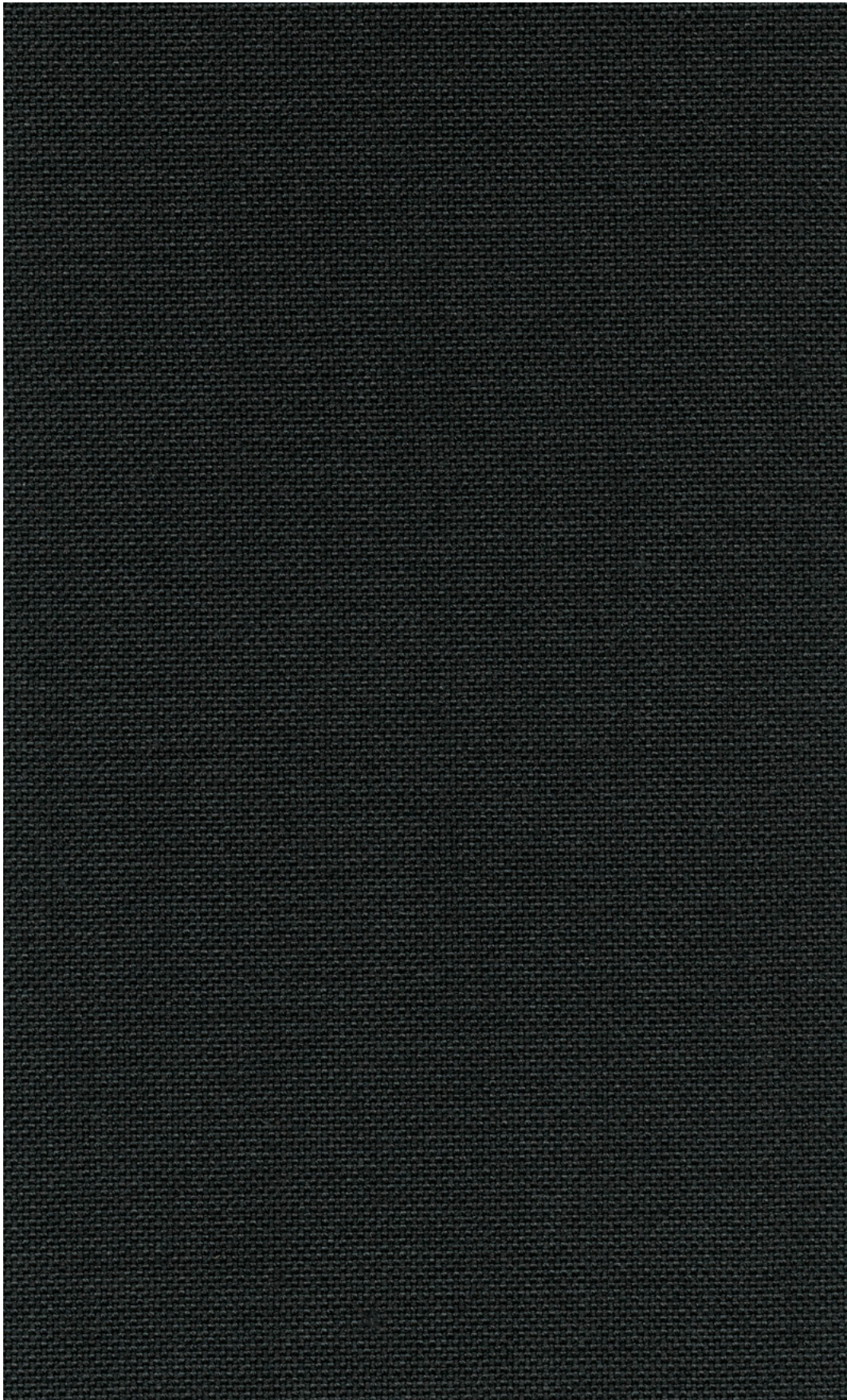
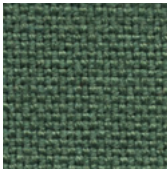


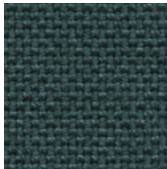
66 Lona. **Wilkhahn**



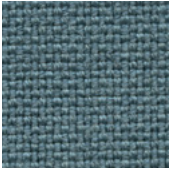
66 Lona.



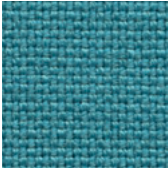
66/92



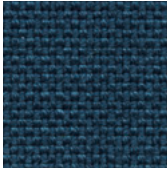
66/94



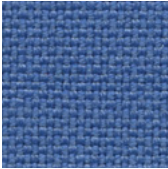
66/14



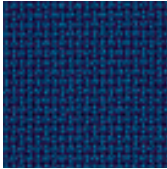
66/81



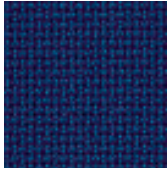
66/83



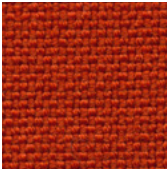
66/73



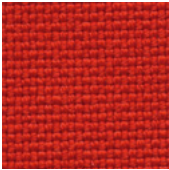
66/71



66/70



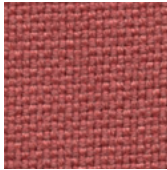
66/68



66/65



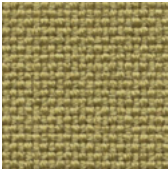
66/61



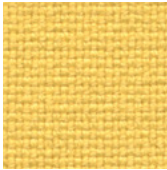
66/67



66/41



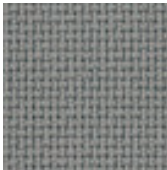
66/90



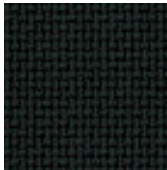
66/50



66/32



66/12



66/10

Beschreibung

85% Schurwolle,
15% Polyamid
520 g/lfd. m
Breite 140 cm

Prüfungsverfahren

Scheuerfestigkeit:
150.000 Scheuerhübe,
BS EN ISO 12947-2 (Martindale)
Lichtechtheit:
5-7, BS EN ISO
105-B02 Methode 2
Pilling:
4, BS EN ISO 12945-2
Reibechtheit:
Trocken 4-5, Nass 4-5,
EN ISO 105-X12
Flammschutz:
EN 1021 1&2
BS 7176 MH (CMHR)
ÖNORM A3800-1 Q1
ÖNORM B 3825 (CMHR)
Schwerentflammbarkeit hängt
vom verwendeten Schaum ab.

Reinigung

Festverspannte Bezüge:
regelmäßig absaugen,
professionelle
Trockenreinigung
Abnehmbare Bezüge:



Description

85% new wool,
15% polyamide
520 g/lin. m
width 140 cm (55")

Test results

Abrasion:
150.000 rubs,
BS EN ISO 12947-2 (Martindale)
Lightfastness:
5-7, BS EN ISO
105-B02 Method 2
Pilling:
4, BS EN ISO 12945-2
Fastness to rubbing:
dry 4-5, wet 4-5,
EN ISO 105-X12
Flame resistance:
EN 1021 1&2
BS 7176 MH (CMHR)
ÖNORM A3800-1 Q1
ÖNORM B 3825 (CMHR)
Flame retardancy depends
on the foam used.

Cleaning

Fixed covers:
periodical vacuum cleaning,
professional cleaning
with dry foam
Removable covers:



Description

85 % laine vierge,
15 % polyamide
520 g/m
laize 140 cm

Résultats des tests

Résistance à l'abrasion :
150 000 révolutions selon,
BS EN ISO 12947-2 (Martindale)
Résistance à la lumière :
5-7, BS EN ISO
105-B02 méthode 2
Boulochage :
4, BS EN ISO 12945-2
Résistance au frottement :
à sec 4-5, mouillé 4-5,
EN ISO 105-X12
Tenue au feu :
EN 1021 1&2
BS 7176 MH (CMHR)
ÖNORM A3800-1 Q1
ÖNORM B 3825 (CMHR)
L'inflammabilité dépend de la
mousse mise en œuvre.

Entretien

Revêtements non amovibles :
aspirer régulièrement,
nettoyage à sec
professionnel Revêtements
amovibles :



Descripción

85% pura lana,
15% poliamida
520 g/m de 140 cm
de ancho

Pruebas

Resistencia contra rozamiento:
150.000 golpes,
BS EN ISO 12947-2 (Martindale)
Resistencia a la luz:
5-7, BS EN ISO
105-B02 método 2
Pilling:
4, BS EN ISO 12945-2
Solidez al rozamiento:
seco 4-5, húmedo 4-5,
EN ISO 105-X12
Protección contra llamas:
EN 1021 1&2
BS 7176 MH (CMHR)
ÖNORM A3800-1 Q1
ÖNORM B 3825 (CMHR)
La protección contra llamas
depende de la espuma utilizada.

Limpieza

Tapizados fijos: aspirar
regularmente, limpieza
profesional en seco
Tapizados
intercambiables:



50810000 - BH

Wilkhahn Germany

Wilkening + Hahne GmbH+Co. KG, Fritz-Hahne-Straße 8, 31848 Bad Münder

Wilkhahn worldwide

Australia, Belgium, China, Deutschland, España, Hong Kong, Japan, Maroc, Nederland, Österreich, Polska, Schweiz, Singapore, South Africa, United Arab Emirates, United Kingdom, United States of America

wilkhahn.com