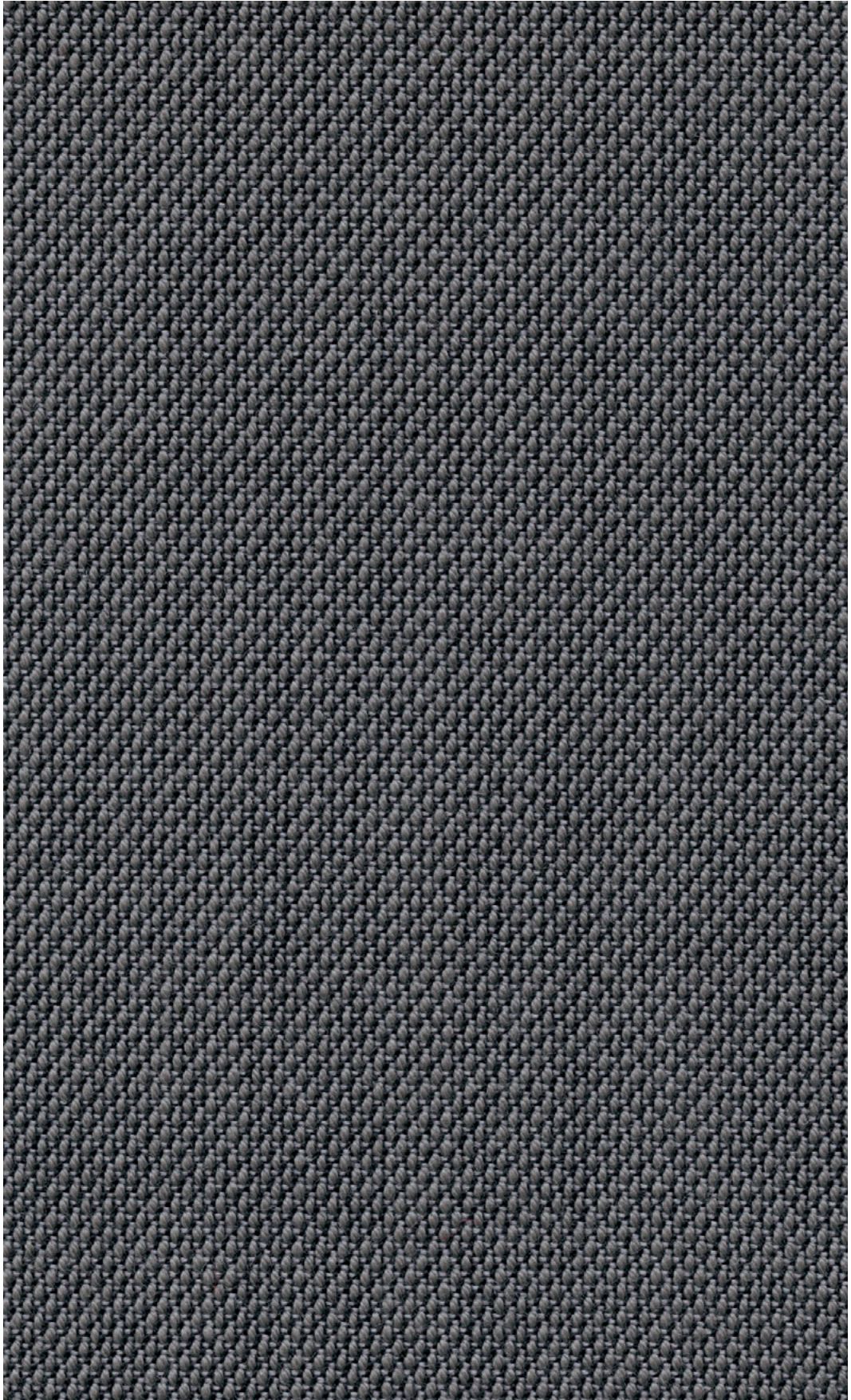
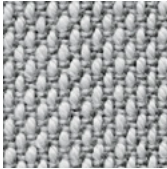


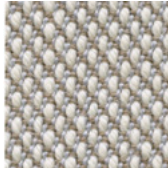
91 Kvadrat Steelcut Trio. **Wilkhahn**



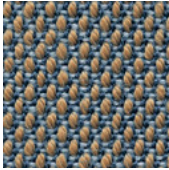
91 Kvadrat Steelcut Trio.



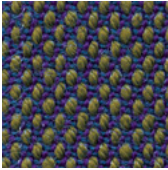
91/113



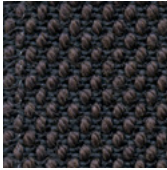
91/205



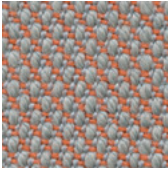
91/253



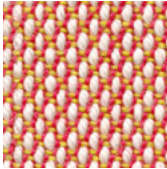
91/283



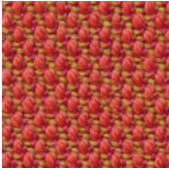
91/383



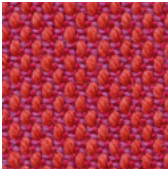
91/426



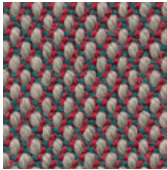
91/515



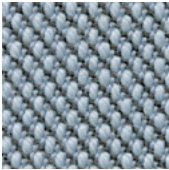
91/533



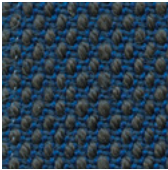
91/553



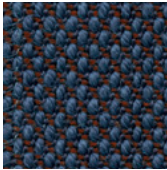
91/645



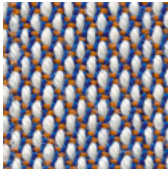
91/713



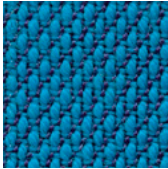
91/756



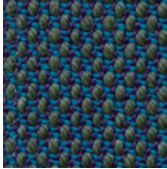
91/776



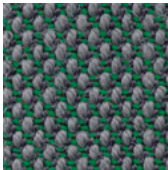
91/806



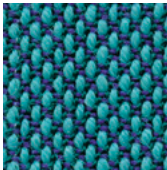
91/865



91/883



91/966



91/983

Die digitalen Muster weichen von den Originaltönen ab.
 The digital sample colours differ from the originals.
 Les échantillons numériques diffèrent du nuancier original.
 De digitale kleurstenen kunnen afwijken van de originele.
 Los tonos de colores de las muestras en formato digital, varían de los originales.

Beschreibung

90% Schurwolle,
Kammgarn
10% Nylon
770 g/dfd. m,
Breite ca. 140 cm

Prüfungsergebniss:

Scheuerfestigkeit:
ca. 100.000 Scheuer-
hübe, EN ISO 12947
(Martindale)
Lichtechtheit:
5-7, BS EN ISO 105-B02
Methode 2

Pilling:
4, EN ISO 12945
Reibechtheit:
Trocken 4-5, Nass 3-5,
EN ISO 105-X12
Flammschutz:
bei Bestellung bitte
angeben
EN 1021-1/2
BS 5852 part 1
DIN 4102 B2
Önorm B1/Q1
NF D 60 013
UNI 9175 1IM
US Cal. Bull. 117, – 2013
NFPA 260
AS/NZS 3837
IMO FTP Code 2010:
Part 8
B2 und Crib 5 und SN
198 898 5.3 bei
schwerentflammbare
Ausrüstung.

Reinigung

Festverspannte Bezüge:
regelmäßig absaugen,
professionelle Trocken-
reinigung.
Abnehmbare Bezüge:



Description

90% wool,
Worsted
10% nylon
770 g/lin. m,
Width approx. 140 cm

Test results

Abrasion:
approx. 100,000 rubs,
BS EN ISO 12947
(Martindale)
Lightfastness:
5-7, BS EN ISO 105-B02
method 2

Pilling:
4, EN ISO 12945
Fastness to rubbing:
Dry 4-5, wet 3-5,
EN ISO 105-X12
Flame retardancy:
please state when
ordering
EN 1021-1/2
BS 5852 part 1
DIN 4102 B2
Önorm B1/Q1
NF D 60 013
UNI 9175 1IM
US Cal. Bull. 117, – 2013
NFPA 260
AS/NZS 3837
IMO FTP Code 2010:
Part 8
B2 and Crib 5 and SN 198
898 5.3 with
flame-retardant finish.

Cleaning

Permanent covers: vacu-
um them regularly and
have them dry cleaned.
Replaceable covers:



Description

90 % laine vierge
peignée
10 % nylon
770 g/m,
Laize : ±140 cm

Résultats des tests

Résistance à l'abrasion :
env. 100 000 révolutions
selon DIN EN ISO 12947
(Martindale)
Résistance à la lumière :
5-7, BS EN ISO 105-B02
méthode 2

Boulochage :
4, EN ISO 12945
Résistance au frotte-
ment :
à sec 4-5, humide 3-5,
EN ISO 105-X12
Tenue au feu :
à préciser sur le bon de
commande
EN 1021-1/2
BS 5852 part 1
DIN 4102 B2
Önorm B1/Q1
NF D 60 013
UNI 9175 1IM
US Cal. Bull. 117, – 2013
NFPA 260
AS/NZS 3837
IMO FTP Code 2010:
Part 8
B2 et Crib 5 et SN 198
898 5.3 si traité 'difficile-
ment inflammable'

Entretien

Revêtements non amo-
vibles : aspirer régulière-
ment, nettoyage à sec
professionnel
Revêtements amovibles :



Omschrijving

90% scheerwol,
kammgaren
10% nylon
770 g per l/m
breedte ca. 140 cm

Testgegevens

Slijtvastheid:
ca. 100.000 toeren, EN
ISO 12947 (Martindale)
Lichtechtheid:
5-7, BS EN ISO 105-B02
Methode 2

Pilling:
4, EN ISO 12945
Wrijftechtheid:
droog 4-5, nat 3-5
EN ISO 105-X12
Brandvrijheid:
bij bestelling graag
opgeven
EN 1021-1/2
BS 5852 deel 1
DIN 4102 B2
Önorm B1/Q1
NF D 60 013
UNI 9175 1IM
US Cal. Bull. 117, – 2013
NFPA 260
AS/NZS 3837
IMO FTP Code 2010:
deel 8
B2 en Crib 5 en SN 198
898 5.3 wanneer vlam-
vertragend behandeld.

Reiniging

Vaste bekleding:
regelmäßig stofzuigen,
professionele reiniging
met droogschuim.
Afneembare bekleding:



Descripción

90% lana,
estambre
10% nylon
770 g/m,
Ancho aprox.140 cm

Pruebas

Resistencia contra
rozamiento:
aprox. 100.000 golpes,
EN ISO 12947
(Martindale)
Resistencia a la luz:
5-7, BS EN ISO 105-B02
Método 2

Pilling:
4, EN ISO 12945
Solidez al rozamiento:
Seco 4-5, húmedo 3-5,
EN ISO 105-X12
Protección contra llamas:
por favor especificar en
el pedido
EN 1021-1 / 2
BS 5852 parte 1
DIN 4102 B2
Önorm B1 / Q1
NF D 60 013
UNI 9175 1IM
US Cal. Bull. 117, - 2013
NFPA 260
AS / NZS 3837
IMO FTP Code 2010:
Parte 8
B2 y Crib 5 y SN 198 898
5.3
equipo ignífugo.

Limpieza

Tapizados fijos: aspirar
regularmente, limpieza
profesional en seco.
Tapizados intercambi-
ables:



DK/016/024

50756000 - BH 11.2017

Wilkhahn Germany

Wilkening + Hahne GmbH+Co. KG, Fritz-Hahne-Straße 8, 31848 Bad Münder

Wilkhahn worldwide

Australia, Belgium, China, Deutschland, España, Hong Kong, Japan, Maroc, Nederland, Österreich, Polska, Schweiz, Singapore, South Africa, United Arab Emirates, United Kingdom, United States of America

wilkhahn.com