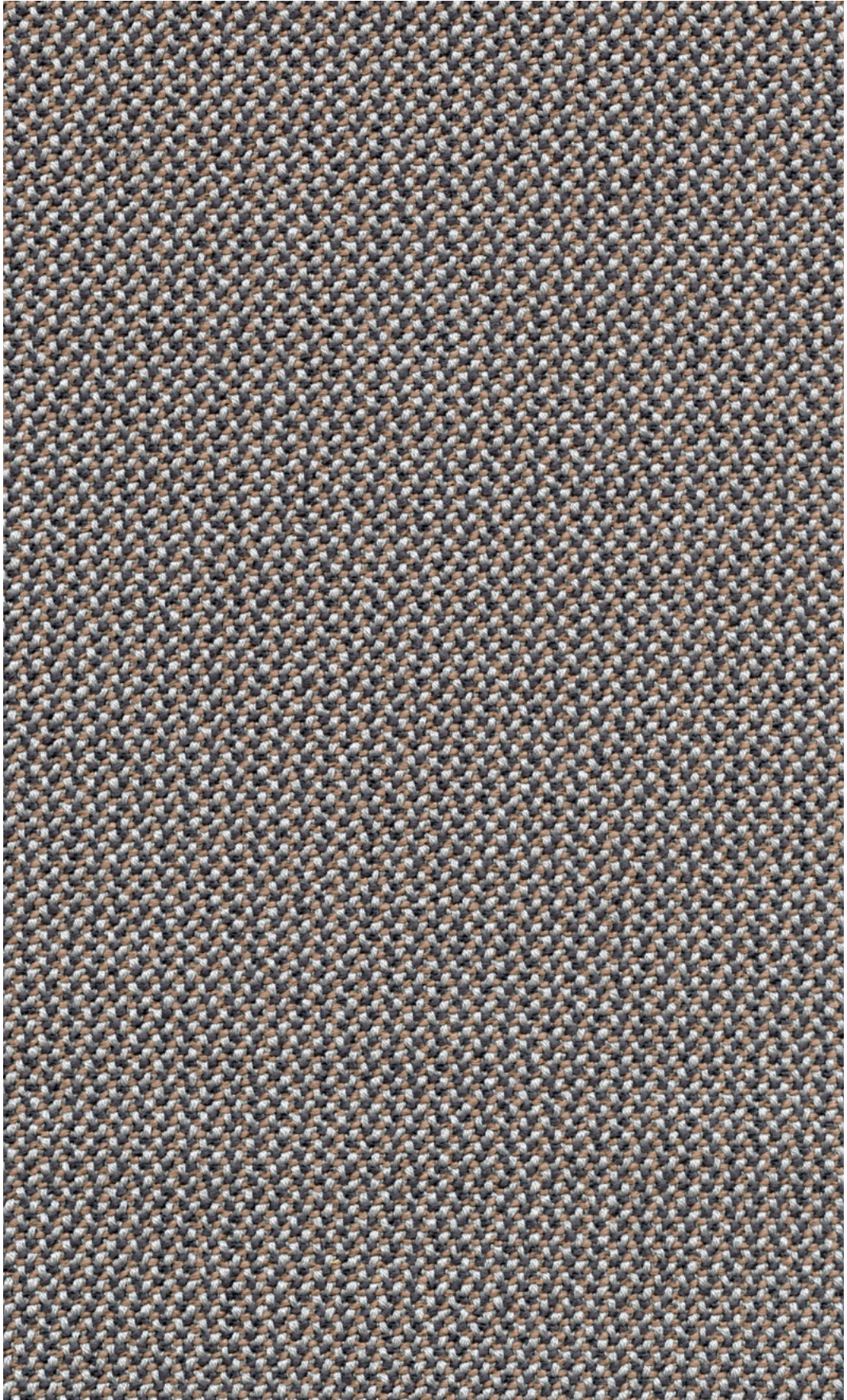
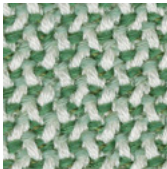


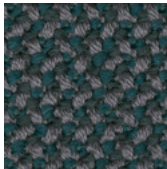
92 Credo. **Wilkhahn**



92 Credo.



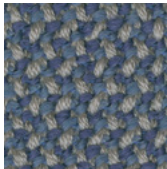
92/84



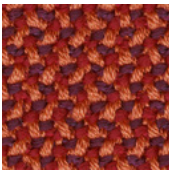
92/82



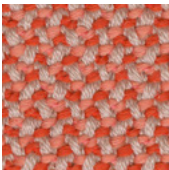
92/86



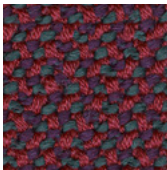
92/81



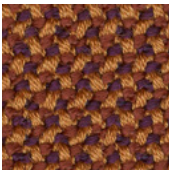
92/93



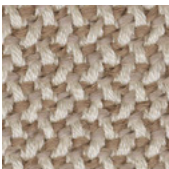
92/85



92/92



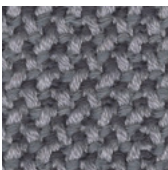
92/89



92/94



92/88



92/99



92/25



92/08

Beschreibung

95 % Schurwolle
5 % Polyamid
870 g/lfd. m,
Breite 140 cm

Prüfungsergebnisse

Scheuerfestigkeit:
100.000 Scheuerhübe
DIN EN ISO 12947-2
(Martindale)
Lichtechtheit:
mind. 5-8 EN ISO 105-B02
Methode 2
Pilling:
mind. 4-5 EN ISO 12945-2
Reibechtheit:
Trocken 5, Nass 4-5
EN ISO 105-X12
Flammschutz: bei Bestellung
bitte angeben
FAR 25.853 (12 Sek. vertikal)
CAL TB 117-2013
DIN 4102-1 B2
EN 13501-1
EN 1021-1 und -2
BS 5852:1979 (part1)
BS 5852:2006 (part2) Crib5
BKZ: 5.3 SN 198898
UNI 9175 (1 IM)
NF P92 503-507 M2
IMO: 2014/90/EU Schiffs-
ausrüstungsrichtlinie

Reinigung

Festverspannte Bezüge:
regelmäßig absaugen,
professionelle Trockenreinigung
Abnehmbare Bezüge:

**Description**

95 % wool
5 % polyamide
870 g/lin. m,
width 140 cm

Test results

Abrasion:
100,000 rubs
DIN EN ISO 12947-2
(Martindale)
Lightfastness:
at least 5-8 EN ISO 105-B02
Method 2
Pilling:
at least 4-5 EN ISO 12945-2
Fastness to rubbing:
Dry 5, wet 4-5
EN ISO 105-X12
Flammability: please state as
follows on the order
FAR 25.853 (12 secs vertical)
CAL TB 117-2013
DIN 4102-1 B2
EN 13501-1
EN 1021-1 and -2
BS 5852:1979 (part1)
BS 5852:2006 (part2) Crib5
BKZ: 5.3 SN 198898
UNI 9175 (1 IM)
NF P92 503-507 M2
IMO: 2014/90/EU Marine
Equipment Directive (MED)

Cleaning

Fixed covers: periodical vacuum
cleaning, professional cleaning
with dry foam
Removable covers:

**Description**

95 % laine peignée
5 % polyamide
870 g/m,
laize 140 cm

Résultats des tests

Résistance à l'abrasion :
100 000 révolutions
DIN EN ISO 12947-2
(Martindale)
Résistance à la lumière :
mini. 5-8 EN ISO 105-B02
méthode 2
Boulochage :
mini. 4-5 EN ISO 12945-2
Résistance au frottement :
sec 5, humide 4-5
EN ISO 105-X12
Tenue au feu : À préciser
sur le bon de commande
FAR 25.853 (12 sec. vertical)
CAL TB 117-2013
DIN 4102-1 B2
EN 13501-1
EN 1021-1 et -2
BS 5852:1979 (part1)
BS 5852:2006 (part2) Crib5
BKZ: 5.3 SN 198898
UNI 9175 (1 IM)
NF P92 503-507 M2
IMO : 2014/90/EU Directive
Équipement Maritime (MED)

Entretien

Revêtements non
amovibles :
aspirer régulièrement,
nettoyage à sec professionnel
Revêtements amovibles :

**Descripción**

95 % lana
5 % poliamida
870 g/m de
de ancho

Resultado de las pruebas

Resistencia contra rozamiento:
100.000 golpes
DIN EN ISO 12947-2
(Martindale)
Resistencia a la luz:
al menos 5-8 EN ISO 105-B02
método 2
Pilling:
al menos 4-5 EN ISO 12945-2
Solidez al rozamiento:
Seco 5, húmedo 4-5
EN ISO 105-X12
Protección contra llamas:
Por favor, indique lo siguiente
en el pedido
FAR 25.853 (12 seg. vertical)
CAL TB 117-2013
DIN 4102-1 B2
EN 13501-1
EN 1021-1 y -2
BS 5852:1979 (part1)
BS 5852:2006 (part2) Crib5
BKZ: 5.3 SN 198898
UNI 9175 (1 IM)
NF P92 503-507 M2
IMO: 2014/90/EU Directiva sobre
equipos marinos (MED)

Limpieza

Tapizados fijos:
aspirar regularmente,
limpieza profesional en seco
Tapizados intercambiables:

**Wilkhahn Germany**

Wilkening + Hahne GmbH+Co. KG, Fritz-Hahne-Straße 8, 31848 Bad Münder

Wilkhahn worldwide

Australia, Belgium, China, Deutschland, España, France, Hong Kong, Japan, Maroc, Nederland, Österreich, Polska, Schweiz, Singapore, South Africa, United Arab Emirates, United Kingdom, United States of America

wilkhahn.com